

# FACT SHEET



## F 17

(Issued 1/7/2008)

91 Hammond Avenue, PO Box 456  
Wagga Wagga NSW 2650  
Phone: 02 6922 0608 Fax: 02 6921 2241  
E-mail: admin@rwcc.com.au

## BE WATERWISE IN THE WORKPLACE



*Have you ever stopped to think about how much water is used at work?. For every person 150 litres per day of treated water are used in workplace environments. That's 16 buckets per person per day, which is 30% of our total water usage. This Fact Sheet describes how reducing our water usage in the workplace will save money and reduce impact on our environment.*

Most of the water used in factories, commercial buildings, educational institutions and other workplaces goes in air conditioning, food processing and manufacturing processes. A significant portion is used for cleaning, food and drink preparation, gardening, and in toilets and washrooms.

We all have a community responsibility to use water carefully in the workplace by adopting water efficient practices, and ensuring that work processes do not waste water.

### THE ADVANTAGES OF BEING WATERWISE IN THE WORKPLACE

By saving water, we create a more efficient and environmentally friendly workplace.

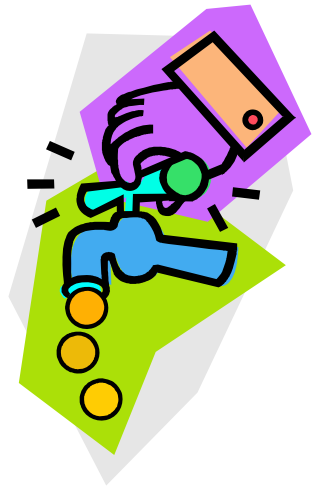
By using water wisely you will immediately:

- Reduce your water bills and increase profits
- Make large savings on your energy bills for water heating
- Reduce your waste-water and trade wastes discharges.

There are also major benefits in the longer term.

By reducing our water usage, we can eliminate or defer the need for new dams and supply systems. This results in:

- Lower costs to the community
- a better environment.



Studies have shown that major savings can be made by individuals using water sensibly and efficiently, and by employers installing a range of water-efficient appliances. For example, as part of a project for State Rail, NSW Public Works has installed water-saving devices and appliances at Sydney's Central Station and achieve at 40% reduction in water use.

In most workplaces, a 20% reduction in water use is readily achievable.

### WATER-EFFICIENT DESIGN

Designing a new facility with water-efficiency in mind will enable you to save water and money with little effort. Consider the following.

- Designing water-efficient buildings and air conditioning systems.
- Designing water-efficient gardens and outdoor areas, including directing drainage from paved areas for watering garden beds.
- Use of recycled water for industrial processes where appropriate and developing opportunities for cost-effective re-use of water in your operations.

## SAVING WATER IN THE WORKPLACE

The following are examples of where you can save water in your workplace.

- Report leaking taps to maintenance personnel or your supervisor. Continuously damp areas may indicate leaks and should also be reported. One drop per second wastes 30 litres per day, and a continuously dripping tap wastes 600 litres per day.
- When using a tap for cleaning purposes, don't allow water to flow continuously down the drain. Put the plug in and run enough water into the sink for the job. A running tap uses 20 litres per minute.
- Shorter showers save water and energy. A 10 minute shower uses up to 200 litres.
- Use the urinal rather than the toilet when appropriate. Toilets use up to 12 litres per flush.
- Encourage your workmates to save water.
- In processing operations, follow the correct procedures to ensure water is not wasted.
- Look for areas where water can be recycled, for example, for use on lawns and garden beds.
- Use a broom rather than a hose to clean outdoor paths and paved areas. A hose uses 1000 litres per hour.
- Water garden beds and lawns only once or twice week. This will encourage the roots to go deeper and make plants hardier. Plant drought-tolerant, low water requirement species.

## WATER-SAVING DEVICES AND APPLIANCES

Many devices and appliances can help reduce water consumption. These include:-

- Water-saving shower roses or flow restrictors
- Dual flush toilets
- Individual, sensor-operated urinals
- Self-closing, aerated, sensor operated or 1/4 turn ceramic disk taps
- Water-efficient dishwashers and washing machines, and
- Tap timers, micro-irrigation systems, trigger nozzles etc.

Encourage management to install these devices, and ensure that they are used effectively. A WaterWise Technical information Sheet called WaterWise in the workplace for Employers is available, which alerts employers to the importance of sensible and efficient water use. It also gives detailed information on the suitability and effectiveness of the various devices and appliances available.

A water Conservation Rating and Labelling Scheme is being developed by Standards Australia to allow simple comparison of the water efficiency of appliances.

### ***BE WATERWISE.... IT'S WORTH IT !***

For water-saving techniques to have a significant impact in the workplace, the co-operation of all individuals is needed. Remember that by ensuring water-efficient practices and processes are carried out in your workplace, your water bills are reduced, increasing your profitability and reducing your impact on the environment.

*Be Waterwise.....it's Worth it !*

